

Catch Up Premium Budget: £17, 040

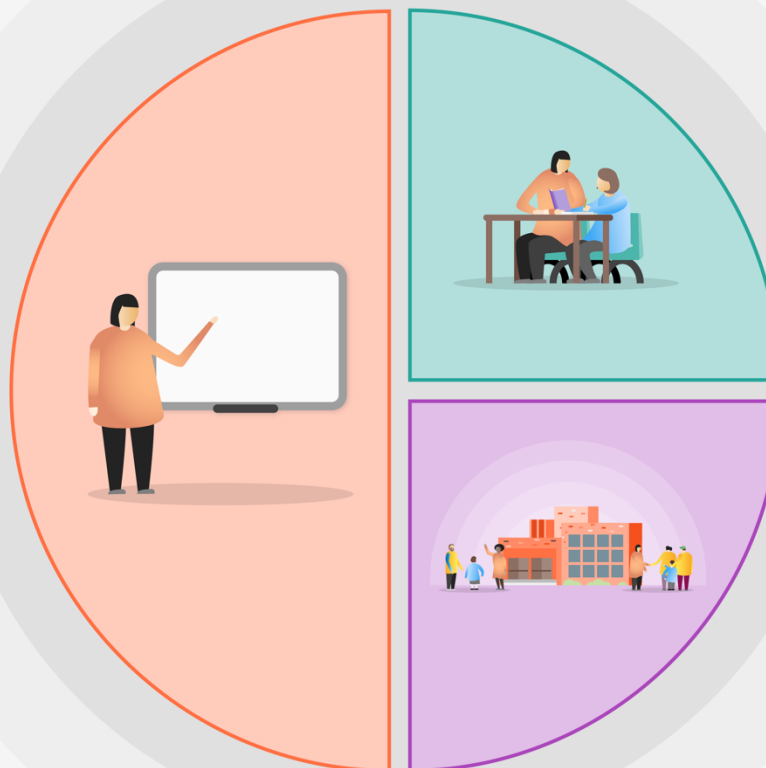
£17,160.12

## 1 Teaching

\*To continue our 'stage not age' approach (Power Teaching) in English and Maths (Contribution towards licence costs £1600)

\*Gap analysis documents created by Literacy and Numeracy Lead and time allocated to support long term planning (money taken from release time allocation of £3000)

\*White Rose Hub Online Training to support staff in developing knowledge and understanding of different teaching methods for maths (£249)



## 2 Targeted academic support

\*Academic Mentor to provide targeted support in reading based on information gathered from gap analysis. Texts to be purchased to support reluctant readers. (£3000)

\*NELI (Nuffield Early Language Intervention) oral language intervention programme for Reception (money taken from release time allocation)

\*Release time for class teachers to enable monthly meetings with parents to discuss progress and support from home (money taken from release time allocation)

## 3 Wider strategies

\*Extra PE sessions incorporated into timetable to promote emotional health and well being (contribution towards sports coach cost) £8,141

\*Themed weeks planned into the curriculum to re-engage children and provide opportunity to build cultural capital (£812.12 resources)

\*Extension of the Art of Brilliance programme to support children's mental health and well-being (Contribution £358)